

Batería Plomo DSK 6v. 1,2Ah

EAN 8420738103187

Ref. 10318



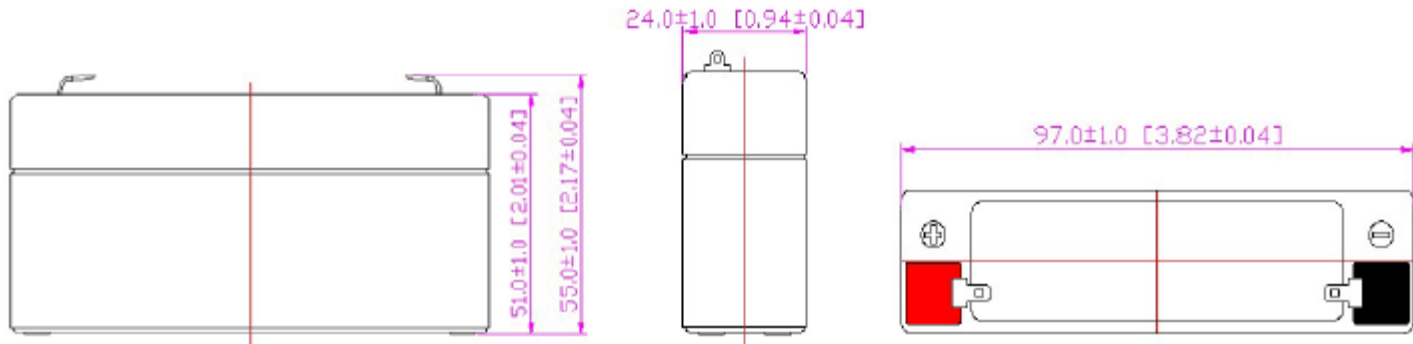
Descripción:

BATERIA PLOMO DSK

Especificaciones :

Tecnología AGM: Uso de separadores de fibra de vidrio entre las placas, con gran capacidad de absorción, para contener el electrolito

MODELO BATERIA	10318 (6v. 1.2Ah. DSK Bat. Plomo Acid)			
VIDA UTIL	3~5 años			
CAPACIDAD (25°C)	20HR(0.60A,5.25V)	10HR(0.115A,5.25V)	5HR(0.216A,5.25V)	1HR(0.72A,5.25V)
	1.20AH	1.15AH	1.08AH	0.72AH
DIMENSIONES	Longitud	Ancho	Altura	Altura Total
	97mm (3.82inch)	24mm (0.94inch)	51mm (2.01inch)	55mm (2.17inch)
PESO APROX	0.29 Kg (0.64 lbs) ±5%			
RESISTENCIA INTERNA	Carga completa at 25°C:≤45mΩ			
DESCARGA	2% de reducción al mes (25°C)			
CAPACIDAD AFECTADA POR TEMP.(20HR)	40°C	25°C	0°C	-15°C
	102%	100%	85%	65%
VOLTAJE DE CARGA (25oC)	Ciclo normal		Ciclo en modo flotación	
	7.20-7.5V(-15mV/°C), max. Current: 0.36A		6.75-6.9V (-10mV/) °C	

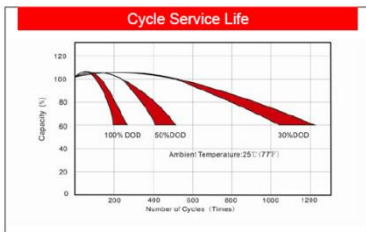
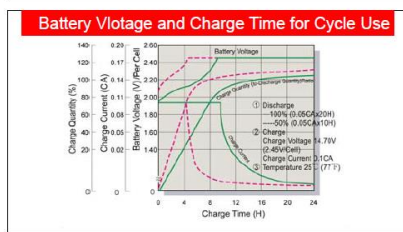
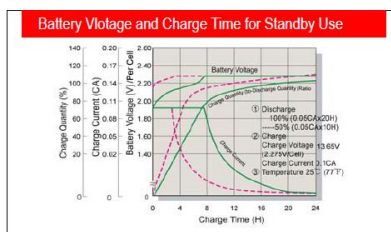
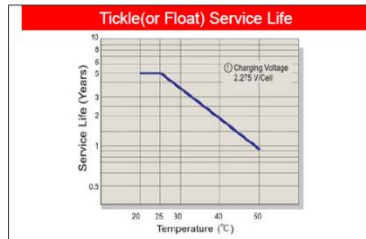
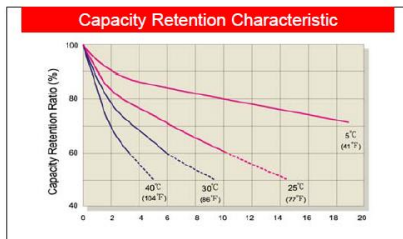
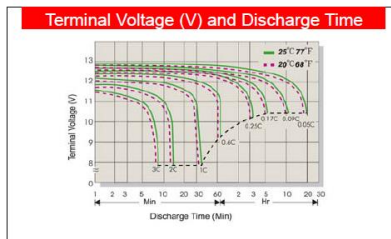


Batería Plomo DSK 6v. 1,3Ah



EAN 8420738103187

Ref. 10318

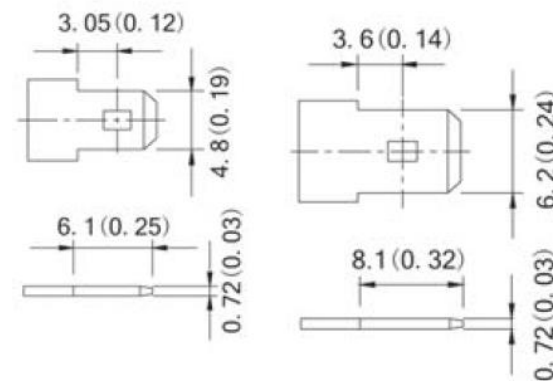


Constant Current Discharge (CC, Unit: A) at 25°C (77°F)

F.V/Time	5Min	10Min	15Min	30Min	1Hr	2Hr	3Hr	4Hr	5Hr	6Hr	10Hr	20Hr
1.85V/Cell	3.43	2.56	2.00	1.19	0.69	0.40	0.30	0.242	0.208	0.170	0.111	0.058
1.80V/Cell	3.49	2.61	2.04	1.22	0.71	0.40	0.31	0.247	0.212	0.173	0.113	0.059
1.75V/Cell	3.56	2.66	2.08	1.24	0.72	0.41	0.31	0.252	0.216	0.176	0.115	0.060
1.70V/Cell	3.88	2.82	2.21	1.29	0.73	0.42	0.32	0.256	0.220	0.179	0.117	0.061
1.67V/Cell	4.27	3.06	2.39	1.36	0.74	0.42	0.32	0.259	0.222	0.181	0.119	0.062
1.60V/Cell	4.62	3.22	2.52	1.42	0.75	0.43	0.33	0.262	0.225	0.183	0.120	0.062

Constant Power Discharge (CP, Unit: W) at 25°C (77°F)

F.V/Time	5Min	10Min	15Min	30Min	1Hr	2Hr	3Hr	4Hr	5Hr	6Hr	10Hr	20Hr
1.85V/Cell	6.68	4.99	3.91	2.33	1.35	0.77	0.59	0.47	0.41	0.33	0.22	0.11
1.80V/Cell	6.81	5.09	3.98	2.37	1.38	0.79	0.60	0.48	0.41	0.34	0.22	0.11
1.75V/Cell	6.93	5.18	4.06	2.42	1.40	0.80	0.61	0.49	0.42	0.34	0.23	0.12
1.70V/Cell	7.56	5.49	4.30	2.51	1.43	0.82	0.62	0.50	0.43	0.35	0.23	0.12
1.67V/Cell	8.32	5.96	4.67	2.65	1.44	0.83	0.63	0.50	0.43	0.35	0.23	0.12
1.60V/Cell	9.01	6.27	4.91	2.77	1.46	0.84	0.64	0.51	0.44	0.36	0.23	0.12



F1 Terminal

F2 Terminal