



# HC65/S SPECIFICATIONS

## BATTERY DESIGN

- Absorbent glass mat (AGM) technology
- 12V battery VRLA
- Rugged construction
- Can be mounted in any orientation except inverted.
- US DOT and IATA certified non-spillable
- Sealed Construction (Non-Spillable Battery)
- Suited for repeated discharges such as running your vehicle with winches or other electrical accessories
- Can be choose to fitted with TP brass automotive terminal and side terminal
- Shipped fully charged - just install and go!

## PERFORMANCE FEATURES

- PHCA: 1500A at 80°F (27°C); for 5 seconds
- PCCA: 1020A at 0°F (-18°C); for 5 seconds
- CCA: 825A at 0°F (-18°C)
- CA/MCA: 1000A at 32°F (0°C)
- HCA: 1200A at 80°F (27°C)
- Reserve capacity: 135 minutes
- Short circuit current: 2200A
- Operation temperature range: -5°F (-15°C) to 122°F (50°C)

## Nominal Dimensions

Length		Width		Height		Total Height		Weight	
mm	in	mm	in	mm	in	mm	in	kg	pound
261	10.28	171.5	6.75	182.5	7.19	186.5	7.34	21.00	46.30

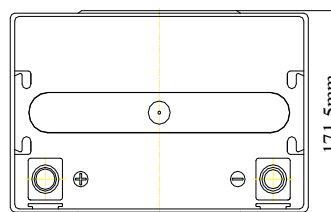
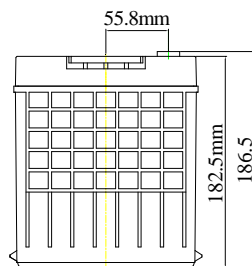
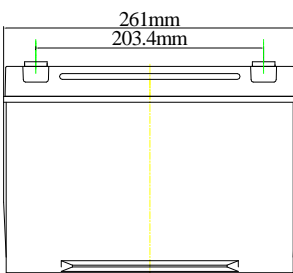
## HIGH RATE DISCHARGE AT 77°F (25°C)

5 sec.	10 sec.	15 sec.	20 sec.
1500A	1280A	1170A	1100A

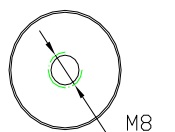
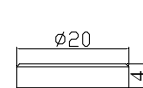
## EXTENDED DISCHARGE AT 77°F (25°C) TO 10.02V

5min	15min	1hr	3hr	5hr	10hr	20hr
305A	145A	47A	18A	11A	6.2A	3.4A

## PHYSICAL CHARACTERISTICS



Terminal: M8 + FR45 Side terminal



---

## BATTERY CONFIGURATION



**Battery Model: HC65/B**  
**Battery Terminal: M8 (Button terminal)**



**Battery Model: HC65/S**  
**Battery Terminal: S (M8 Button terminal  
Fitted with side terminal)**



**Battery Model: HC65/ST**  
**Battery Terminal: ST (M8 Button terminal fitted with  
TP28 brass automotive terminal and  
Side terminal)**



**Battery Model: HC65/T**  
**Battery Terminal: T (M8 Button terminal fitted  
with TP28 brass automotive terminal)**