

# PBCG SERIES - Deep Cycle GEL

## PBCG12-60(12V60Ah)

### Specification

Nominal Voltage	12V	
Nominal Capacity(20HR)	60.0Ah	
Dimension	Length	260 ±2mm
	Width	170 ±2mm
	Container Height	182.5 ±2mm
	Total Height (with Terminal)	185.5 ±2mm
Approx Weight	Approx 19.0 kg	
Terminal	T6	
Container Material	ABS	
Rated Capacity	61.0 Ah/3.05A	(20hr, 1.80V/cell, 25°C)
	57.0 Ah/5.70A	(10hr, 1.80V/cell, 25°C)
	45.6 Ah/9.12A	(5hr, 1.75V/cell, 25°C)
	42.75 Ah/14.25A	(3hr, 1.75V/cell, 25°C)
	33.63 Ah/33.63A	(1hr, 1.65V/cell, 25°C)
Max. Discharge Current	500A (5s)	
Internal Resistance	Approx 8.5mΩ	
Operating Temp. Range	Discharge	-20 ~ 55°C
	Charge	0 ~ 40°C
	Storage	-20 ~ 50°C
Nominal Operating Temp. Range	25 ±3° C	
Cycle Use	Initial Charging Current less than 12.5A. Voltage	
	14.4V~14.7V at 25°C Temp. Coefficient -30mV/°C	
Standby Use	No limit on Initial Charging Current Voltage	
	13.5V~13.8V at 25°C Temp. Coefficient -20mV/°C	
Capacity affected by Temperature	40° C	103%
	25° C	100%
	0° C	86%
Self Discharge	PBCG series batteries may be stored for up to 9 months at 25° C(77°F) and then a freshening charge is required. For higher temperatures the time interval will be shorter.	



### Applications

- ◆ Telecommunications
- ◆ Solar system
- ◆ Wind power system
- ◆ Wheelchair
- ◆ Floor cleaning machines
- ◆ Golf trolley
- ◆ Boats

Intertek



### Constant Current Discharge (Amperes) at 25 °C (77°F)

F.V/Time	15min	20min	30min	45min	1h	2h	3h	4h	5h	6h	8h	10h	20h
1.85V/cell	62.70	54.15	43.32	33.06	26.79	17.10	13.11	10.83	8.55	7.41	6.27	5.42	2.93
1.80V/cell	79.80	64.61	50.73	35.91	30.21	18.24	13.68	11.40	8.84	7.98	6.56	5.70	3.05
1.75V/cell	85.50	69.54	53.01	38.19	31.35	18.81	14.25	11.97	9.12	8.27	6.84	5.87	3.17
1.70V/cell	91.20	72.96	55.29	40.17	32.49	19.38	14.82	12.43	9.69	8.55	7.13	6.10	3.29
1.65V/cell	76.95	76.95	57.00	42.18	33.63	20.52	15.39	12.83	10.26	8.84	7.41	6.33	3.42
1.60V/cell	102.6	79.80	59.85	43.89	34.77	21.66	15.96	13.40	10.83	9.41	7.98	6.56	3.54

### Constant Power Discharge (Watts) at 25 °C (77°F)

F.V/Time	15min	20min	30min	45min	1h	2h	3h	4h	5h	6h	8h	10h	20h
1.85V/cell	116.00	100.18	80.14	61.16	49.56	31.64	24.25	20.04	15.82	13.71	11.60	10.02	5.42
1.80V/cell	143.64	115.94	91.31	64.64	54.38	32.83	24.62	20.52	15.90	14.36	11.80	10.26	5.49
1.75V/cell	149.63	121.70	92.77	66.83	54.86	32.92	24.94	20.95	15.96	14.46	11.97	10.27	5.55
1.70V/cell	155.04	124.03	93.99	68.80	55.23	32.95	25.19	21.12	16.47	14.54	12.11	10.37	5.60
1.65V/cell	159.89	126.97	94.05	69.60	55.49	33.86	25.39	21.16	16.93	14.58	12.23	10.44	5.64
1.60V/cell	164.16	127.68	95.76	70.22	55.63	34.66	25.54	21.43	17.33	15.05	12.77	10.49	5.66

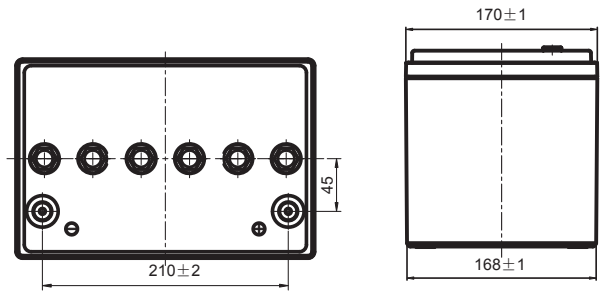
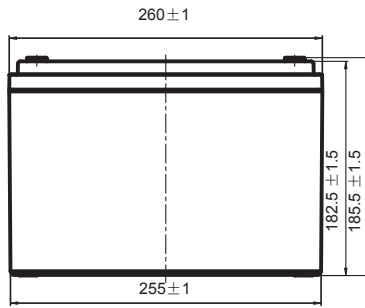
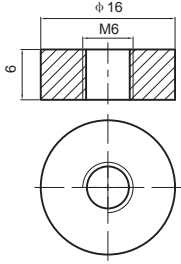
Disclaimer: Manufacturers have the right to self-modify the parameters of the updates without notice, please keep in touch with manufacturers to obtain the latest information.



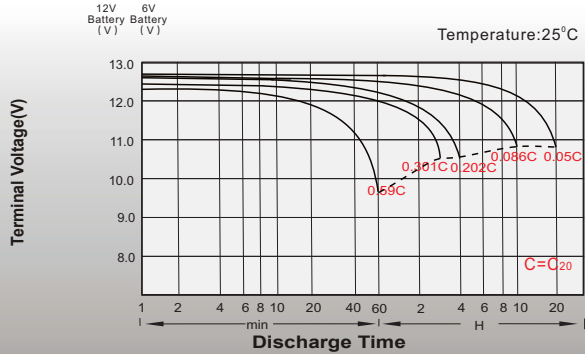
# Dimensions

## T6 Terminal

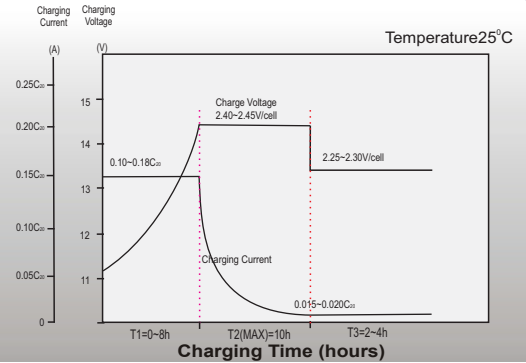
Unit: mm



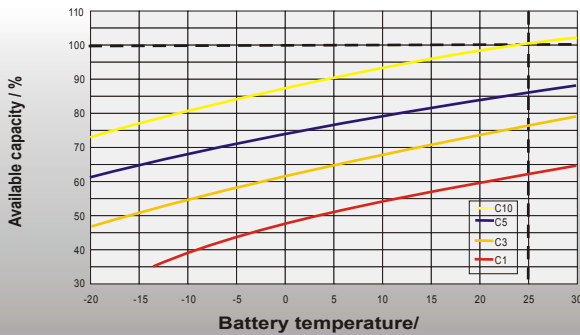
## Discharge Characteristics



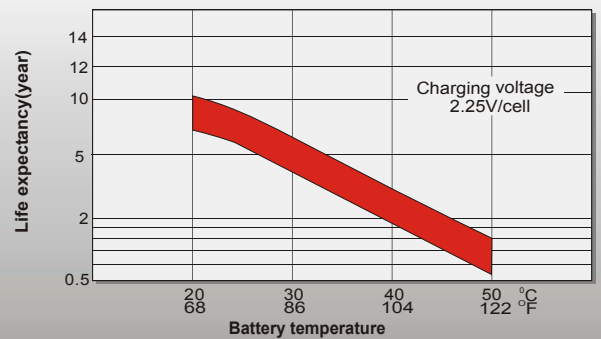
## Float Charging Characteristics



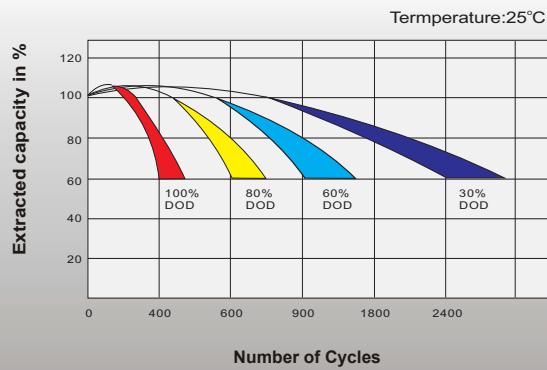
## Temperature Effects in Relation to Battery Capacity



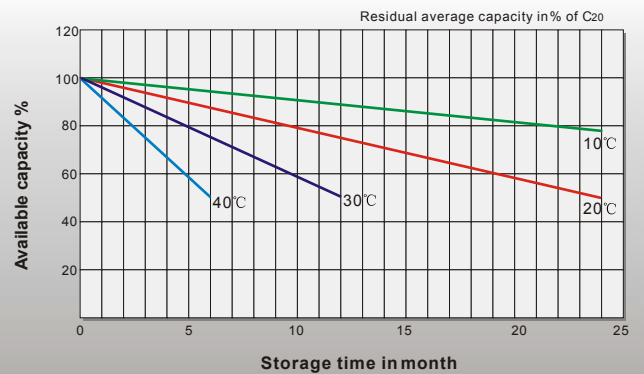
## Effect of Temperature on Long Term Float Life



## Cycle Life in Relation to Depth of Discharge



## General Relation of Capacity VS. Storage Time



## Contact