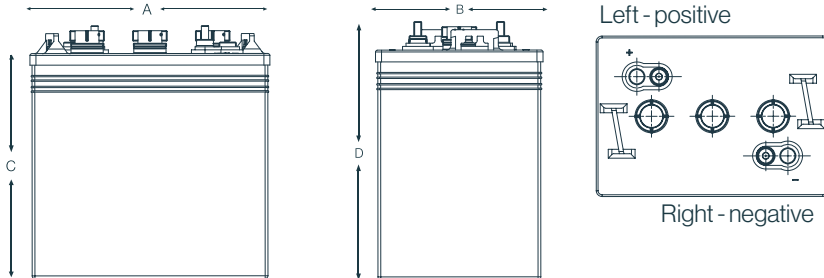


# QSRF 105 (GC2)

## QUASAR Flooded Carbon Nano Battery



### Features

- Ultra energy efficient due to low resistance

---

- Increased cycle life due to Carbon Nano Tube Technology

---

- Suitable for opportunity charging

---

- Cost savings due to increased efficiency

---

- Up to 2 x faster recharge

---

- Allows for opportunity charging to give you those extra running times when required

---

- Suitable for extreme temperature variants

### Electrical Specifications

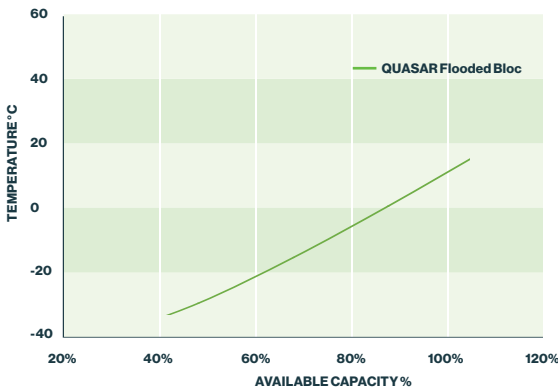
<b>C5 Capacity</b>	185Ah
<b>C20 Capacity</b>	225Ah
<b>Voltage</b>	6V
<b>80% DOD Voltage Cutoff</b>	5.6V
<b>Self Discharge</b>	Less than 3% per month (20°C/68°F)
<b>Charge Temperature</b>	Min: -10°C (14°F) / Max: 50°C (122°F)
<b>Discharge Temperature**</b>	Min: -40°C (-40°F) / Max: 50°C (122°F)
<b>Storage</b>	Min: -20°C (-4°F) / Max: 60°C (140°F)

### Mechanical Specifications

Industry Reference	GC2	
<b>Length (A)</b>	10.2in	260 mm
<b>Width (B)</b>	7.1in	180 mm
<b>Height (C)</b>	9.7in	247 mm
<b>Height (D)</b>	10.9in	277 mm
<b>Weight</b>	61.7 lbs	28 kgs
<b>Terminal (Opt'l)</b>	UTL	
<b>Cell(s)</b>	3	
<b>Electrolyte</b>	Flooded	
<b>Terminal Torque Nm</b>	11-12Nm	

NOTE: There is a tolerance of +/-2%.

### Capacity vs Temperature



**IUI Charging** I<sub>1</sub> = min. 12% C<sub>5</sub> max. 40% C<sub>5</sub>  
 U = 2.45 V per cell  
 I<sub>2</sub> = 6% C<sub>5</sub> for max. 4 hours

### Applications

- Golf carts, including electric vehicles

---

- Access Work Platform (AWP)

---

- Cleaning Machines

---

- Maritime

---

- Wheelchairs

---

- Solar & Renewable Energy

---

- Traffic Systems

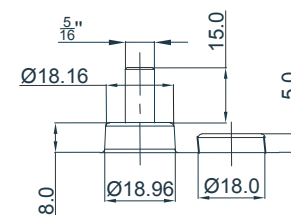
---

- Caravans / Motorhomes RV's

---

- Home Invertor

### UTL Positive & Negative



Compliant with IEC 60254

- +34-91 7973512
- reguerobaterias@gmail.com
- <https://www.reguerobaterias.es>