

UP-G40-12



Specification		
Nominal Voltage	12V	
Nominal Capacity (20HR)	40.0AH	
Dimension	Length	197±2mm (7.76 inches)
	Width	165±2mm (6.50 inches)
	Container Height	170±2mm (6.69 inches)
	Total Height (with Terminal)	170±2mm (6.69 inches)
	Approx Weight	Approx 13.5 kg (29.77lbs)
Terminal	T6	
Container Material	ABS	
Rated Capacity	41.6 AH/2.08A	(20hr, 1.80V/cell, 25°C/77°F)
	37.0AH/3.77A	(10hr, 1.75V/cell, 25°C/77°F)
	33.2 AH/6.64A	(5hr, 1.75V/cell, 25°C/77°F)
	28,8 AH/9.61A	(3hr, 1.75V/cell, 25°C/77°F)
	22.85 AH/22.85A	(1hr, 1.67V/cell, 25°C/77°F)
Max. Discharge Current	380A (5s)	
Internal Resistance	Approx 12.0mΩ	
Operating Temperature Range	Discharge: -20~55°C (-4~131°F)	
	Change : 0~40°C (32~104°F)	
	Storage : -20~50°C (-4~122°F)	
Nominal Operating Temperature Range	25±3°C (77±5°F)	
Cycle Use	Initial Charging Current less than 7.6A.Voltage. 14.4V~15.0V at 25°C (77°F) Temp. Coefficient -30mV/°C	
Standby Use	No limit on Initial Charging Current Voltage. 13.5V~13.8V at 25°C (77°F) Temp. Coefficient -20mV/°C	
Capacity affected by Temperature	40°C (104°F) 103%	
	25°C (77°F) 100%	
	0°C (32°F) 86%	
Self Discharge	Batteries may be stored for up to 9 months at 25°C (77°F) and then a freshening charge is required.	

Constant Current Discharge (Amperes) at 25°C (77°F)														
F.V/Time	20min	30min	45min	1h	2h	3h	4h	5h	6h	7h	8h	9h	10h	20h
1.85V/cell	35,10	27,55	21,05	17,60	11,15	8,51	7,05	6,09	5,25	4,65	4,20	3,84	3,54	1,99
1.80V/cell	40,20	30,80	23,15	19,45	12,10	9,12	7,47	6,39	5,52	4,87	4,39	4,03	3,70	2,08
1.75V/cell	45,20	33,85	25,10	20,75	12,80	9,61	7,82	6,64	5,71	5,04	4,54	4,15	3,77	2,12
1.70V/cell	48,70	36,25	26,65	22,00	13,55	10,04	8,08	6,85	5,91	5,21	4,67	4,26	3,86	2,14
1.67V/cell	50,65	37,70	27,55	22,85	13,90	10,34	8,28	6,99	6,01	5,29	4,74	4,32	3,90	2,17
1.60V/cell	54,90	40,30	29,60	24,25	14,50	10,78	8,60	7,21	6,15	5,40	4,83	4,41	3,98	2,20

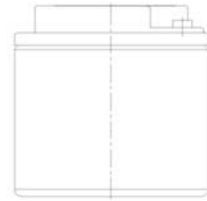
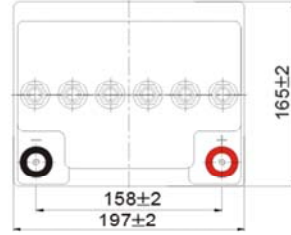
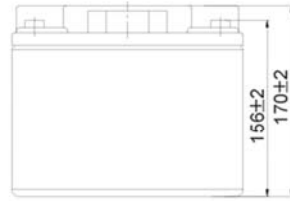
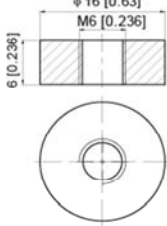
Constant Power Discharge (Watts/cell) at 25°C (77°F)														
F.V/Time	20min	30min	45min	1h	2h	3h	4h	5h	6h	7h	8h	9h	10h	20h
1.85V/cell	67,20	53,10	40,75	34,25	21,85	16,70	13,85	12,00	10,41	9,23	8,34	7,64	7,05	3,98
1.80V/cell	76,00	58,75	44,65	37,60	23,50	17,80	14,65	12,55	10,90	9,61	8,72	8,01	7,35	4,14
1.75V/cell	84,40	64,10	47,90	40,05	24,80	18,75	15,30	13,00	11,25	9,96	8,98	8,24	7,49	4,22
1.70V/cell	89,95	68,00	50,45	42,15	26,20	19,45	15,75	13,40	11,60	10,25	9,23	8,45	7,66	4,26
1.67V/cell	92,60	69,90	51,90	43,45	26,75	20,00	16,05	13,65	11,75	10,40	9,33	8,54	7,74	4,30
1.60V/cell	99,20	74,15	55,35	45,95	27,65	20,75	16,60	14,00	12,00	10,59	9,50	8,71	7,88	4,36



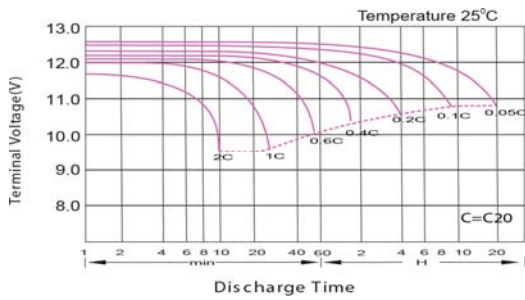
UP-G40-12

Dimensions

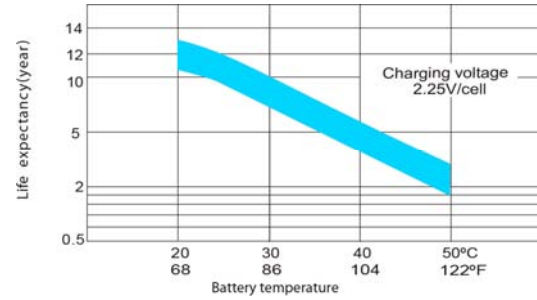
T6 Terminal
Unit: mm [inches]



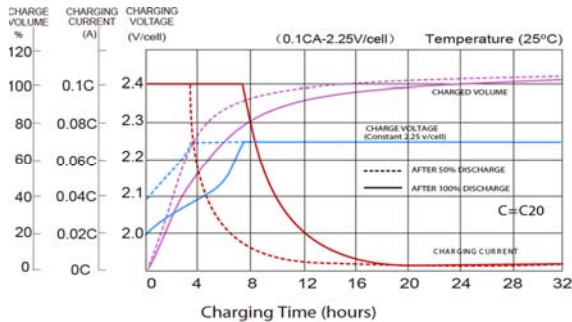
Discharge Characteristics



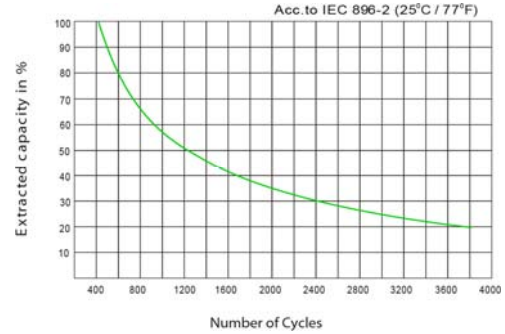
Effect of Temperature on Long Term Float Life



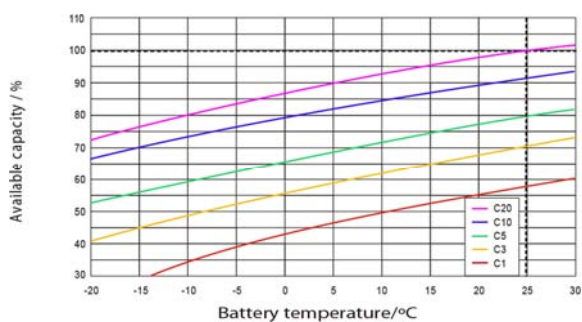
Float Charging Characteristics



Cycle Life in Relation to Depth of Discharge



Temperature Effects in Relation to Battery Capacity



General Relation of Capacity VS. Storage Time

