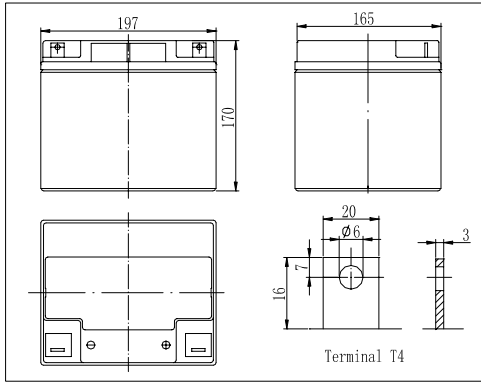
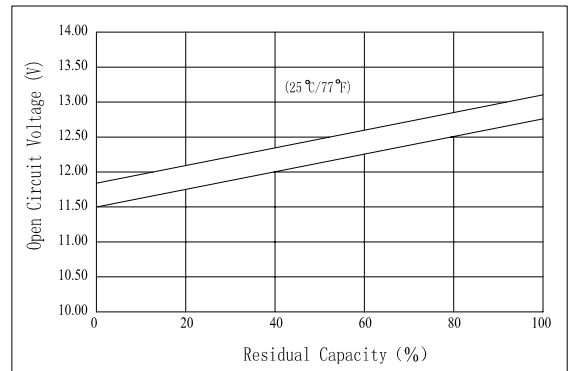


**Dimensions**



**The Relationship for Open Circuit Voltage and Residual Capacity (25°C)**

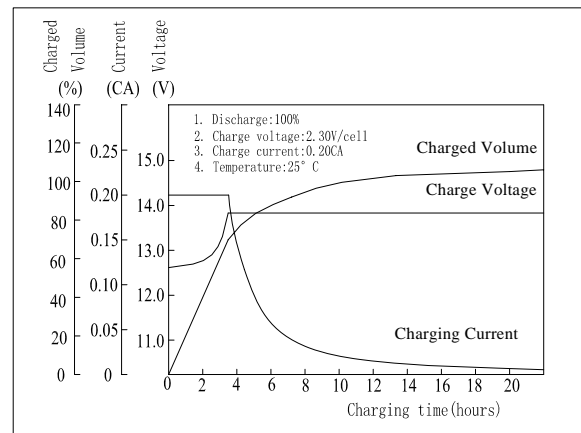


**Specifications**

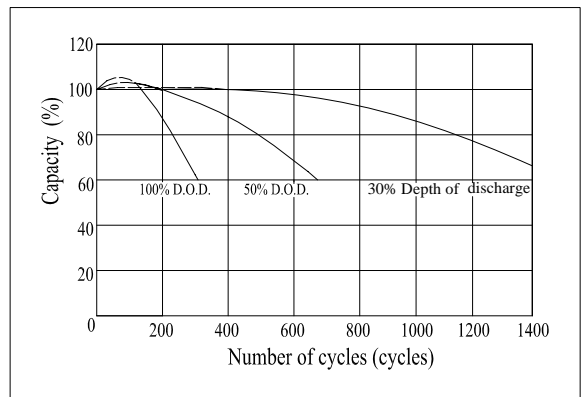
Nominal Voltage		12 V
Capacity(10HR, 25°C)		45Ah
Dimension	Length	197mm (7.76inch)
	Width	165mm (6.50inch)
	Height	170mm (6.69inch)
	Total Height	170mm (6.69inch)
Approx. Weight		14.5kg (32lbs)
Internal resistance (Fully charged, 25°C)		Approx.8.5m Ω
Capacity affected by temperature (10HR)	40°C	102%
	25°C	100%
	0°C	85%
	-15°C	65%
Self-discharge (25°C)	3 month	Remaining Capacity: 91%
	6 month	Remaining Capacity: 82%
	12 month	Remaining Capacity: 65%
Nominal operating temperature		25°C ± 3°C (77°F ± 5°F)
Operating temperature range		-15°C ~ 50°C (5°F ~ 122°F)
Float charging voltage(25°C)		13.50 to 13.80V
Cyclic charging voltage(25°C)		14.10 to 14.40V
Maximum charging current		11.25A
Terminal material		Copper
Maximum discharge current		450A(5 sec.)

- ◆ Gelled electrolyte technology;
- ◆ AGM separator;
- ◆ Recognized by UL & CE;
- ◆ ABS container.

**Charging Characteristics(25°C)**



**Cycle Life(25°C)**



Note: Floating life at 20°C designed for 10 years.

**Constant Current Discharge Characteristics (A, 25°C)**

F.V/TIME	5min	10min	15min	30min	60min	3h	5h	10h	20h
9.60V	97.2	74.3	68.4	44.1	27.9	11.0	7.49	4.57	2.35
10.2V	92.3	70.5	65.7	42.3	26.8	10.8	7.38	4.53	2.33
10.8V	86.8	66.3	62.4	40.2	25.4	10.6	7.23	4.50	2.32

**Constant Power Discharge Characteristics (Watt, 25°C)**

F.V/TIME	5min	10min	15min	30min	60min	3h	5h	10h	20h
9.60V	1021	802	751	495	318	129	88.5	54.5	28.2
10.2V	970	762	721	475	305	127	87.2	54.1	28.0
10.8V	911	716	685	451	290	124	85.5	53.7	27.8