

### Specification

Nominal Voltage	12V	
Nominal Capacity(20HR)	50.0Ah	
Dimension	Length	197 ± 2mm
	Width	165 ± 2mm
	Container Height	170 ± 2mm
	Total Height with Terminal	170 ± 2mm
Approx Weight	Approx 13.4 kg	
Terminal	T7	
Container Material	ABS	
Rated Capacity	50.0 Ah/2.50A	(20hr, 1.75V/cell, 25°C)
	45.5 Ah/4.55A	(10hr, 1.75V/cell, 25°C)
	39.3 Ah/7.86A	(5hr, 1.70V/cell, 25°C)
	34.5 Ah/11.5A	(3hr, 1.70V/cell, 25°C)
	26.9 Ah/26.9A	(1hr, 1.60V/cell, 25°C)
Max. Discharge Current	540A (5s)	
Internal Resistance	Approx 9mΩ	
Operating Temp. Range	Discharge	-20 ~ 55°C
	Charge	0 ~ 40°C
	Storage	-20 ~ 50°C
Nominal Operating Temp. Range	25 ± 3° C	
Cycle Use	Initial Charging Current less than 13.5A. Voltage	
	14.4V~15.0V at 25°C Temp. Coefficient -30mV/°C	
Standby Use	No limit on Initial Charging Current Voltage	
	13.5V~13.8V at 25°C Temp. Coefficient -20mV/°C	
Capacity affected by Temperature	40° C	103%
	25° C	100%
	0° C	86%
Self Discharge	PBCG series batteries may be stored for up to 9 months at 25° C and then a freshening charge is required. For higher temperatures the time interval will be shorter.	



### Applications

- ◆ Telecommunications
- ◆ Solar system
- ◆ Wind power system
- ◆ Wheelchair
- ◆ Floor cleaning machines
- ◆ Golf trolley
- ◆ Boats

Intertek



### Constant Current Discharge (Amperes) at 25 °C (77°F)

F.V/Time	5min	10min	15min	20min	30min	45min	1h	2h	3h	4h	5h	6h	8h	10h	20h
1.85V/cell	72.5	57.0	48.5	40.6	32.1	24.4	20.1	12.8	10.0	8.18	6.95	6.05	4.93	4.18	2.38
1.80V/cell	96.0	71.8	57.8	47.3	36.9	27.6	22.4	13.9	10.7	8.71	7.47	6.50	5.25	4.50	2.45
1.75V/cell	110.4	80.5	64.4	51.9	39.3	29.2	23.7	14.6	11.1	9.00	7.65	6.68	5.34	4.55	2.50
1.70V/cell	123.0	88.8	69.5	55.2	41.5	30.7	24.7	15.3	11.5	9.27	7.86	6.82	5.42	4.57	2.54
1.65V/cell	134.4	94.9	73.2	58.0	43.5	31.6	25.6	15.7	11.9	9.55	8.04	6.97	5.50	4.61	2.57
1.60V/cell	149.4	103.9	79.0	62.3	46.2	33.4	26.9	16.3	12.3	9.77	8.19	7.12	5.57	4.69	2.60

### Constant Power Discharge (Watts/cell) at 25 °C (77°F)

F.V/Time	5min	10min	15min	20min	30min	45min	1h	2h	3h	4h	5h	6h	8h	10h	20h
1.85V/cell	133.7	106.2	91.2	77.1	61.4	47.0	39.0	25.0	19.5	16.0	13.7	11.9	9.77	8.30	4.47
1.80V/cell	175.1	132.2	107.2	88.5	69.8	53.0	43.2	27.0	20.8	17.0	14.6	12.8	10.4	8.92	4.60
1.75V/cell	197.0	145.8	118.0	96.2	73.8	55.5	45.5	28.2	21.5	17.5	15.0	13.1	10.5	9.00	4.64
1.70V/cell	213.1	156.9	125.5	101.3	77.3	58.0	47.3	29.5	22.2	18.0	15.3	13.3	10.7	9.04	4.73
1.65V/cell	228.9	165.8	130.8	105.6	80.2	59.2	48.6	30.1	22.9	18.5	15.6	13.6	10.8	9.11	4.77
1.60V/cell	248.7	177.3	138.7	112.2	84.5	62.2	50.7	31.0	23.6	18.8	15.9	13.8	10.9	9.25	4.80

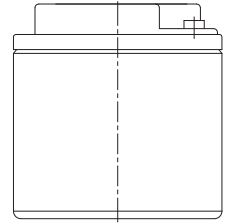
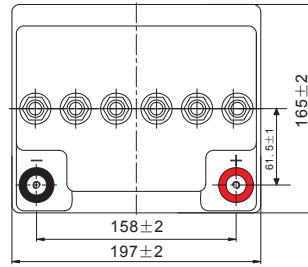
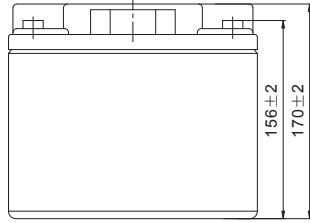
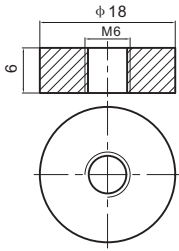
Disclaimer: Manufacturers have the right to self-modify the parameters of the updates without notice, please keep in touch with manufacturers to obtain the latest information.



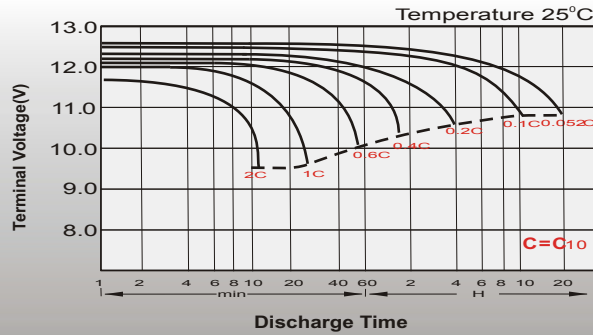
# Dimensions

## T7 Terminal

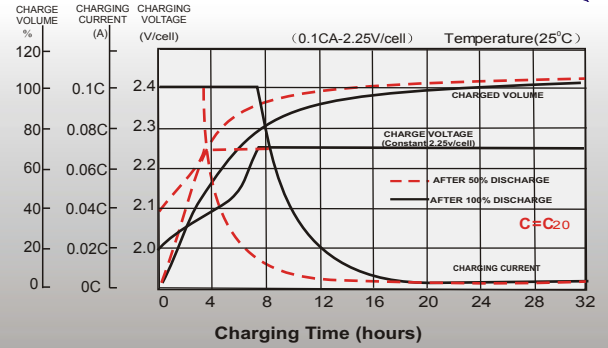
Unit: mm



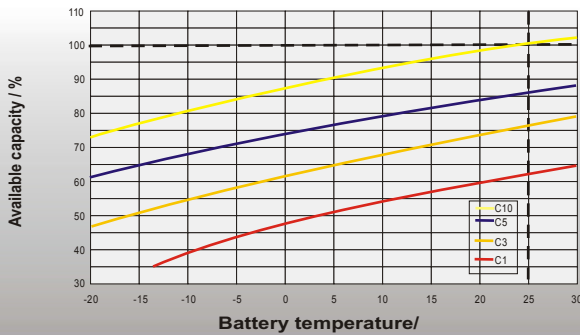
## Discharge Characteristics



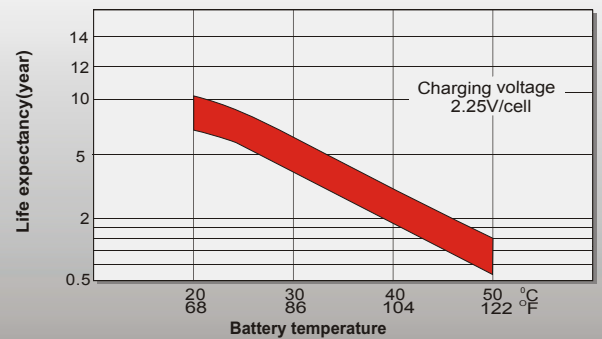
## Float Charging Characteristics



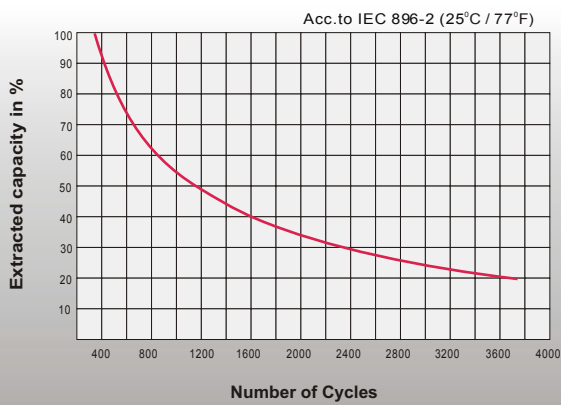
## Temperature Effects in Relation to Battery Capacity



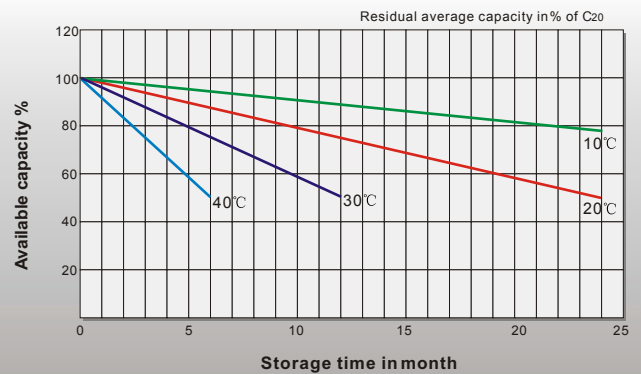
## Effect of Temperature on Long Term Float Life



## Cycle Life in Relation to Depth of Discharge



## General Relation of Capacity VS. Storage Time



## Contact